

## Smart Solution

### 4-Way / 3-Position Proportional Directional Control Valve with Load Sense – "PDFL-10"

**BUCHER**  
hydraulics

#### Features and Advantages

- Compact construction for cavity-type 5 ported / 10 size - 7/8-14 UNF
- Operated by a proportional high-pressure wet-armature solenoid
- Excellent repeatability and low hysteresis
- All exposed parts with zinc-nickel plating
- Slip-on coils rotate and replace without opening the hydraulic envelope
- Similar function as PDFC-10 but with additional (check valve) LS-port
  - Multiple functions (valves) connected to LS-pump without the need of additional check valve and shuttle valve
- PDFL-10-4M and 4L (shown below) available with and without check valve in LS port
- Available in: Low force manual override option, detented in a neutral position
  - Various plug-connector systems and voltages
  - Variety of coil options

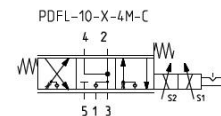
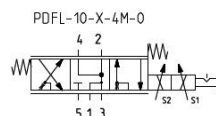
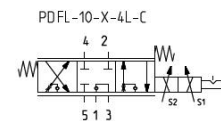
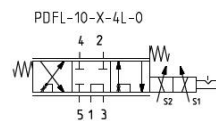
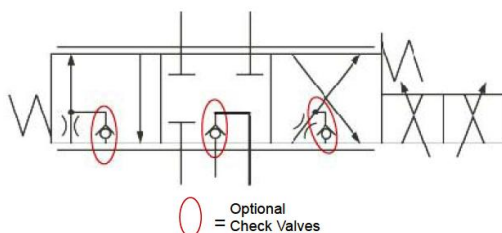


PDFL-10-4X-O-M

**Applications:**  
 Mobile Machines  
 Aerial Work Platforms  
 Forklifts/Material Handling  
 Truck Mounted Cranes

[Download Datasheet](#)

Characteristics	Unit	Technical Data
Maximum Flow	gpm	6
Maximum Pressure	psi	4000
Manual Override		Push-pull with detent
Proportional Coil		2 x Coil D36



Valves are available without manual override

**Contact us TODAY - [sales2@flowprod.com](mailto:sales2@flowprod.com)  
773-528-2000 or 800-631-2029**

Flow Products is your local authorized distributor and application specialist for all your hydraulic and pneumatic product and control system needs. Call us for additional information, technical training requirements and product application reviews.