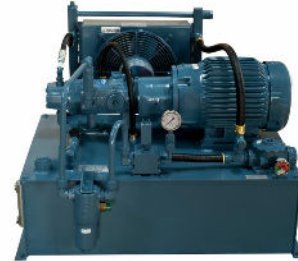


Continental Hydraulics Complete Line of Power Units



With over 50 years' experience providing hydraulic solutions, Continental Hydraulics understands the needs of the market and has put together a complete line of power units that are rugged, durable, high performing and efficient – these units are used in some of the most challenging applications across the globe.

With a commitment to market leading customer support and innovative engineering, Continental's power units deliver the right performance for your demanding applications.



Key features include:

Standard Power Units:

- Wide range of available flow rates: ½ - 75 GPM
- Large standard reservoir capacity: up to 210 gal
- Designs rated to 3000 psi
- All units, 100% tested
- Competitive delivery on standard models
- 18 month warranty on all power units

Custom Power Units capability:

- Flow rates: up to 500 GPM
- Reservoir capacity: up to 5000 gal
- Pressure ratings: up to 5000 psi
- Construction materials: steel, stainless steel or aluminum

JIC Style

This design is ideal for industrial applications requiring flexibility in design and rugged construction.

- Reservoir capacity: 10 – 210 gal
- Flow rate: ½ - 10 GPM

[Learn more >](#)



L-Shape Style

L-Shaped Power Units are ideal for industrial applications requiring high fluid volume and flow rate. Since the pump doesn't have to lift hydraulic fluid, it gets less wear and tear. The readily removable tank cover simplifies cleaning or replacing suction strainers. These Power Units are the perfect choice for demanding high production industrial applications.

- Reservoir capacity: 10 – 210 gal
- Flow rate: ½ - 75 GPM

[Learn more >](#)



Little Champ Style

These power units are designed for use in locations where space is limited or where the noise and vibration of a large power unit would be distracting. They're ideal for applications requiring moderate fluid volume and flow rate, short hydraulic lines and quick cycling.

- Reservoir capacity: 3 - 40 gal
- Flow rate: ½ - 11 GPM

[Learn more >](#)



Low Profile Style

These power units are designed for use in locations where space is at a premium, or where the power of a NFPA/JIC-Style unit is needed in a smaller, less expensive package. They're ideal for industrial applications requiring moderate fluid volume and flow rate.



Low Profile Power Units are the perfect choice for demanding industrial applications where heat buildup is unlikely and compact installation is a must.

- Reservoir capacity: 10 – 30 gal
- Flow rate: ½ - 11 GPM

[Learn more >](#)

Washdown Style

These power units are designed to provide a base for food industry or other similar applications that require pressurized wash downs.

- Reservoir capacity: 3 – 40 gal
- Flow rate: ½ - 10 GPM



[Learn more >](#)

Flow Products is your local authorized distributor and application specialist for all your hydraulic and pneumatic product and control system needs. Call us for additional information, technical training requirements and product application reviews.