

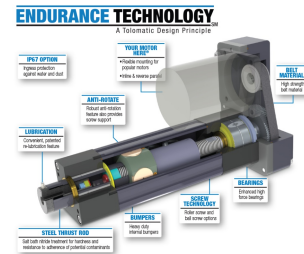
## Flow Products' Superior ROD STYLE ACTUATORS from Tolomatic Inc.

### Part 1: Electric Rod Style Actuators -

Tolomatics' broad range of customizable rod style actuators, paired with their cutting-edge motor technology, represent the pinnacle of performance in industrial automation. With a range of motor options including servo, stepper, and pneumatic, Tolomatics' actuators offer unparalleled flexibility to match specific application requirements. Their actuators have exceptional torque output, speed control, and positional accuracy, enabling precise and dynamic motion control essential for complex industrial processes.

### Endurance Technology:

Tolomatic rod style actuators are built with durable materials, engineered for reliable performance even in harsh industrial environments, thereby reducing downtime and maintenance costs.



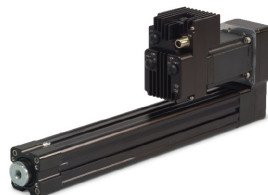
### Customizable Configurations:

Tolomatic actuators offer customizable stroke lengths, force outputs, and mounting options, allowing for seamless integration into existing systems and enabling optimization for your specific application requirements.



### Variety:

Units from low cost 10lbs force to extreme force press units with 30 tons of force. Configurable by size, stroke, and motor control for any application.



### Use Your Motor:

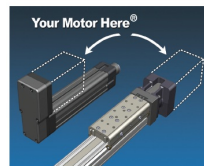
With a wide range of motor options including servo, stepper, and smart motor from Tolomatic. Additionally, actuators can be adapted to use any brand motor you may be standardized on. Allowing flexibility and adaptability across various industries.



### Seamless Integration:

Pneumatic control mode for drop-in replacement of current pneumatic valve systems with no control alterations. No control re-programming needed to convert to electric cylinder reliability.

ADD ANY MOTION SYSTEM  
TO TOLOMATIC'S ACTUATORS



### Comprehensive Support:

Tolomatic provides comprehensive technical support and expertise to assist customers with product selection, installation, and troubleshooting, ensuring a smooth implementation process and maximizing the value of their investment in Tolomatic actuators and motors.



Ask an Engineer  
[tolomatic.com/ask](http://tolomatic.com/ask)

For a more comprehensive look at Tolomatics' product and engineering offering [please click here.](#)

**Contact us at 773-528-2000 or at [sales2@flowprod.com](mailto:sales2@flowprod.com) to have us size and engineer a linear actuator solution for you!**

Flow Products | 2626 West Addison Street, Chicago, IL 60618

[Unsubscribe flownews@flowprod.com](mailto:Unsubscribe_flownews@flowprod.com)

[Update Profile](#) | [Constant Contact Data Notice](#)

Sent byflownews@flowprod.compowered by



Try email marketing for free today!